

CCIE Routing & Switching Lab Hardware Technical Specification

Rack4ccie uses the same hardware that is used in the actual CCIE lab exam. This includes six routers, four Catalyst 3550/3560 series switches, and external devices such as Backbone routers, Frame Relay Switch, that are not accessible by the candidate. The physical topology of Racks currently supports IEWB-RS-topology and we also support Custom topology upon request.

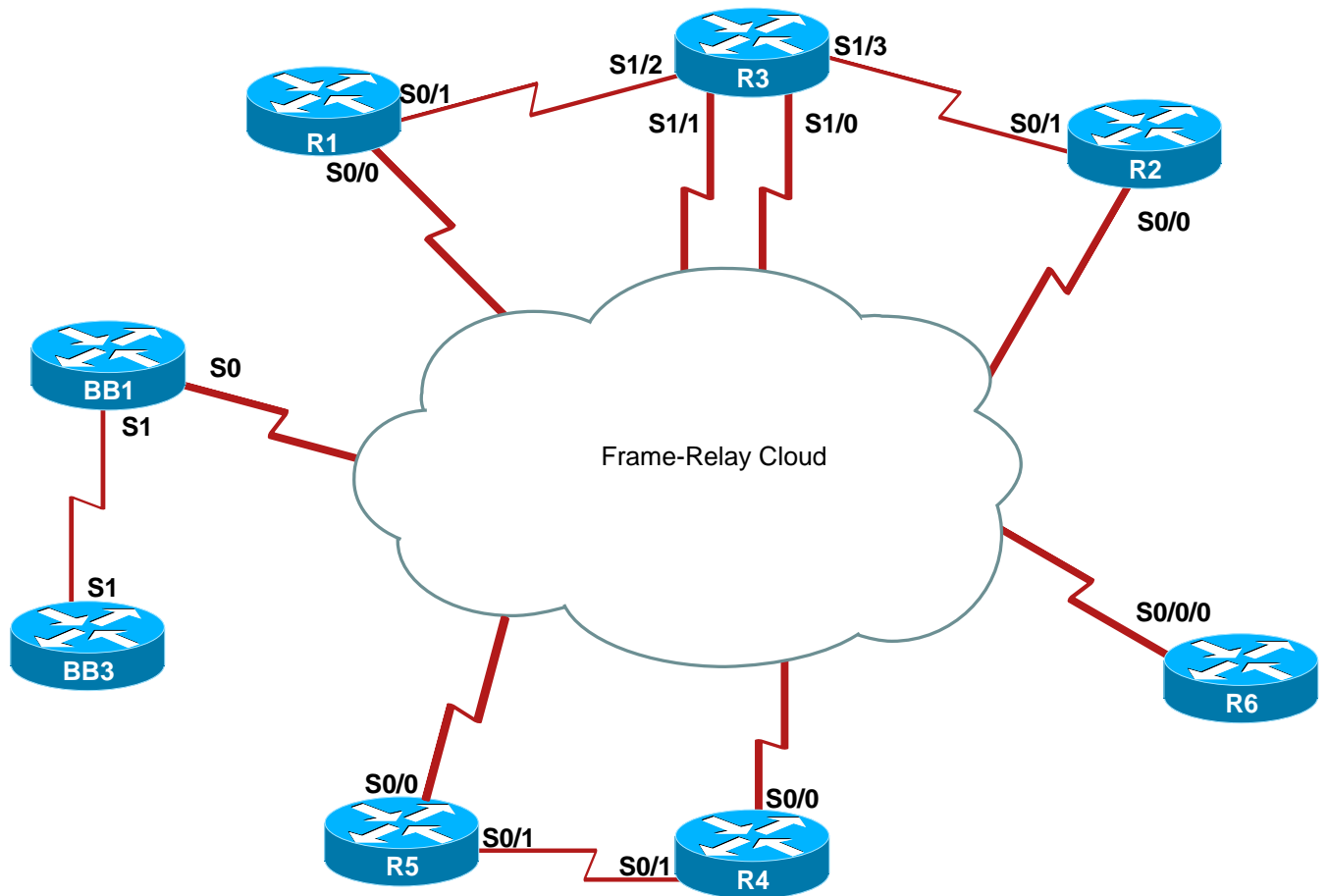
Hardware Specifications:

Device	Our Platform	Modules	RAM	Flash
R1	3725	2 - WIC-1T	256	128
R2	3725	2 - WIC-1T	256	128
R3	3725	1 - NM-4A/S	256	128
R4	3725	2 - WIC-1T	256	128
R5	3725	2 - WIC-1T	256	128
R6	2811/2821/1841	1 - WIC-1T	256	64
SW1	Catalyst 3560-24TS-S	N/A	N/A	N/A
SW2	Catalyst 3560-24TS-S	N/A	N/A	N/A
SW3	Catalyst 3550-24 EMI	N/A	N/A	N/A
SW4	Catalyst 3550-24 EMI	N/A	N/A	N/A
BB1 / Frame Relay Switch	2522	N/A	16	16
BB2	2501	N/A	16	16
BB3	2501	N/A	16	16
Access Server	2511	N/A	16	16

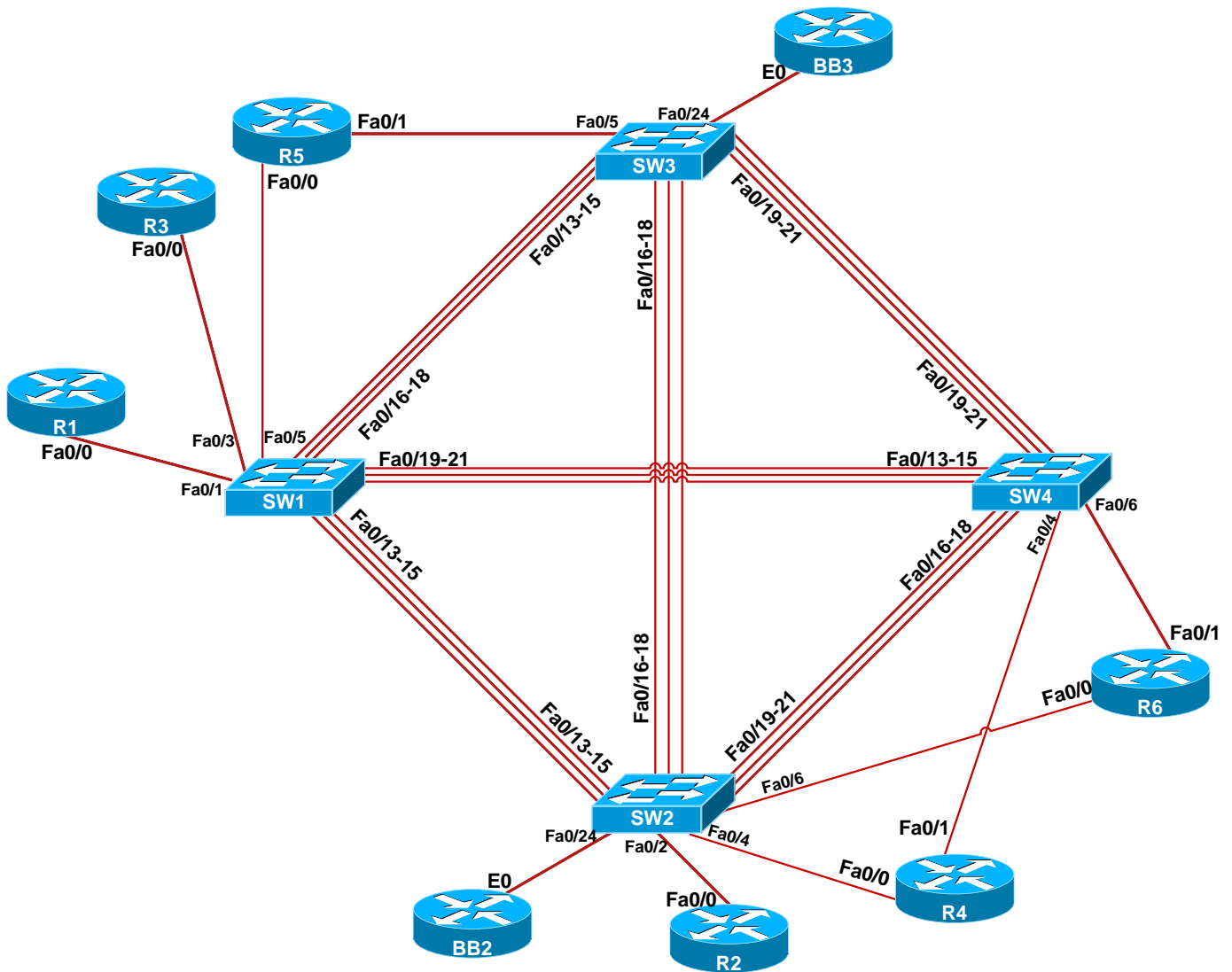
Software Specifications:

Device	Feature Set	Filename
R1	Advanced Enterprise Services	c3725-adventerprisek9-mz.124-15.T9.bin
R2	Advanced Enterprise Services	c3725-adventerprisek9-mz.124-15.T9.bin
R3	Advanced Enterprise Services	c3725-adventerprisek9-mz.124-15.T9.bin
R4	Advanced Enterprise Services	c3725-adventerprisek9-mz.124-15.T9.bin
R5	Advanced Enterprise Services	c3725-adventerprisek9-mz.124-15.T9.bin
R6	Advanced Enterprise Services	c1841-adventerprisek9-mz.124-24.T1.bin
SW1	EMI	c3560-advipservicesk9-mz.122-44.SE6.bin
SW2	EMI	c3560-advipservicesk9-mz.122-44.SE6.bin
SW3	EMI	c3550-ipservicesk9-mz.122-44.SE6.bin
SW4	EMI	c3550-ipservicesk9-mz.122-44.SE6.bin
BB1 / Frame Relay Switch	IP Plus	c2500-is-l.122-15.T17.bin
BB2	IP Plus	c2500-is-l.122-15.T17.bin
BB3	IP Plus	c2500-is-l.122-15.T17.bin
Access Server	IP Plus	c2500-is-l.122-15.T17.bin

Serial Connections – WAN Cabling



Ethernet Connections – LAN Cabling



Frame Relay Switch Configuration

Local Router	Local Interface	Local DLCI	Remote Router	Remote Interface	Remote DLCI
R1	S0/0	102	R2	S0/0	201
R1	S0/0	103	R3	S1/0	301
R1	S0/0	113	R3	S1/1	311
R1	S0/0	104	R4	S0/0	401
R1	S0/0	105	R5	S0/0	501
R2	S0/0	202	R1	S0/0	102
R2	S0/0	203	R3	S1/0	302
R2	S0/0	213	R3	S1/1	312
R2	S0/0	204	R4	S0/0	402
R2	S0/0	205	R5	S0/0	502
R3	S1/0	301	R1	S0/0	103
R3	S1/0	302	R2	S0/0	203
R3	S1/0	304	R4	S0/0	403
R3	S1/0	305	R5	S0/0	503
R3	S1/1	311	R1	S0/0	113
R3	S1/1	312	R2	S0/0	213
R3	S1/1	314	R4	S0/0	413
R3	S1/1	315	R5	S0/0	513
R4	S0/0	401	R1	S0/0	104
R4	S0/0	402	R2	S0/0	204
R4	S0/0	403	R3	S1/0	304
R4	S0/0	413	R3	S1/1	314
R4	S0/0	405	R5	S0/0	504
R5	S0/0	501	R1	S0/0	105
R5	S0/0	502	R2	S0/0	205
R5	S0/0	503	R3	S1/0	305
R5	S0/0	513	R3	S1/1	315
R5	S0/0	504	R4	S0/0	405
R6	S0/0/0	51	BB1	S0	51
R6	S0/0/0	100	BB1	S0	100
R6	S0/0/0	101	BB1	S0	101
R6	S0/0/0	201	BB1	S0	201
R6	S0/0/0	301	BB1	S0	301
R6	S0/0/0	401	BB1	S0	401

Ethernet Connections

Local Device	Local Interface	Remote Device	Remote Interface
R1	Fa0/0	SW1	Fa0/1
R2	Fa0/0	SW2	Fa0/2
R3	Fa0/0	SW1	Fa0/3
R3	Fa0/1	SW3	Fa0/3
R4	Fa0/0	SW2	Fa0/4
R4	E0/1	SW4	Fa0/4
R5	Fa0/0	SW1	Fa0/5
R5	Fa0/1	SW3	Fa0/5
R6	Fa0/0	SW2	Fa0/6
R6	Fa0/1	SW4	Fa0/6
SW1	Fa0/1	R1	Fa0/0
SW1	Fa0/3	R3	Fa0/0
SW1	Fa0/5	R5	Fa0/0
SW2	Fa0/2	R2	Fa0/0
SW2	Fa0/4	R4	Fa0/0
SW2	Fa0/6	R6	Fa0/0
SW2	Fa0/24	BB2	N/A
SW3	Fa0/3	R3	Fa0/1
SW3	Fa0/5	R5	Fa0/1
SW3	Fa0/24	BB3	N/A
SW4	Fa0/4	R4	Fa0/1
SW4	Fa0/6	R6	Fa0/1

Switch Connections

Local Switch	Local Interface	Remote Switch	Remote Interface
SW1	Fa0/13	SW2	Fa0/13
SW1	Fa0/14	SW2	Fa0/14
SW1	Fa0/15	SW2	Fa0/15
SW1	Fa0/16	SW3	Fa0/13
SW1	Fa0/17	SW3	Fa0/14
SW1	Fa0/18	SW3	Fa0/15
SW1	Fa0/19	SW4	Fa0/13
SW1	Fa0/20	SW4	Fa0/14
SW1	Fa0/21	SW4	Fa0/15
Local Switch	Local Interface	Remote Switch	Remote Interface
SW2	Fa0/13	SW1	Fa0/13
SW2	Fa0/14	SW1	Fa0/14
SW2	Fa0/15	SW1	Fa0/15
SW2	Fa0/16	SW3	Fa0/16
SW2	Fa0/17	SW3	Fa0/17
SW2	Fa0/18	SW3	Fa0/18
SW2	Fa0/19	SW4	Fa0/16
SW2	Fa0/20	SW4	Fa0/17
SW2	Fa0/21	SW4	Fa0/18
Local Switch	Local Interface	Remote Switch	Remote Interface
SW3	Fa0/13	SW1	Fa0/16
SW3	Fa0/14	SW1	Fa0/17
SW3	Fa0/15	SW1	Fa0/18
SW3	Fa0/16	SW2	Fa0/16
SW3	Fa0/17	SW2	Fa0/17
SW3	Fa0/18	SW2	Fa0/18
SW3	Fa0/19	SW4	Fa0/19
SW3	Fa0/20	SW4	Fa0/20
SW3	Fa0/21	SW4	Fa0/21
Local Switch	Local Interface	Remote Switch	Remote Interface
SW4	Fa0/13	SW1	Fa0/19
SW4	Fa0/14	SW1	Fa0/20
SW4	Fa0/15	SW1	Fa0/21
SW4	Fa0/16	SW2	Fa0/19
SW4	Fa0/17	SW2	Fa0/20
SW4	Fa0/18	SW2	Fa0/21
SW4	Fa0/19	SW3	Fa0/19
SW4	Fa0/20	SW3	Fa0/20
SW4	Fa0/21	SW3	Fa0/21